




## Patient participation in symptom management in acute oncology: A quality issue

Emma Cohen, Mari Botti & Maxine Duke

Alfred/Deakin Nursing Research Centre  
Epworth/Deakin Centre for Clinical Nursing Research  
Melbourne Australia


The Difference is Deakin



## Aims

- > Overall
  - > Inform a model for the integration of patient participation in symptom management in oncology and haematology contexts and the measurement of quality of that integration.
- > Presentation
  - > Describe complexity of patient symptoms
  - > Discuss patient preferences for participation
  - > Explore prediction modes of factors that influence patient preference for participation

The Difference is Deakin




## Participation Defined

- > "Participation means getting involved or being allowed to become involved in a decision-making process or the delivery of a service or the evaluation of a service or even simply to become one of a number of people consulted on an issue or matter"

Brownlea (1987) *Social Science and Medicine*

The Difference is Deakin




## Background

- > Symptoms are common and distressing
- > Symptom management in acute care is
  - > Complex
  - > Frequently suboptimal

(Cohen et al., 2008; Miaskowski, 2006; Given & Sherwood, 2005)
- > Patient involvement is not routinely sought

(Henderson, 1998; Keatinge et al., 2002; Florin, 2008; Wilkinson et al, 2008)


The Difference is Deakin



## Symptom Management

- > Assessments
  - > Patient self reports
  - > Patient experience
- > Ongoing appraisal of care
  - > Clinician knowledge of aetiology
  - > Evidence-based treatment options
  - > Patients' acceptability of treatments
- > Treatment

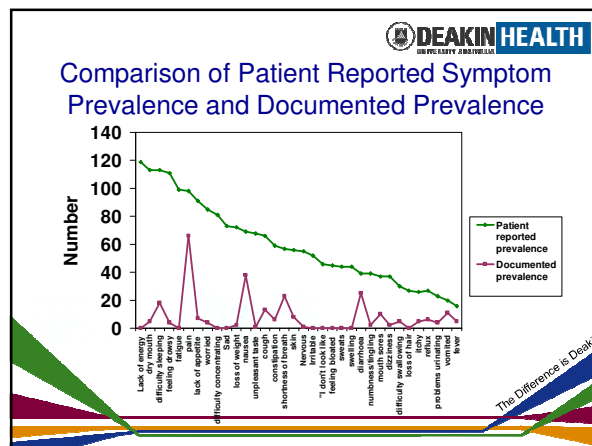
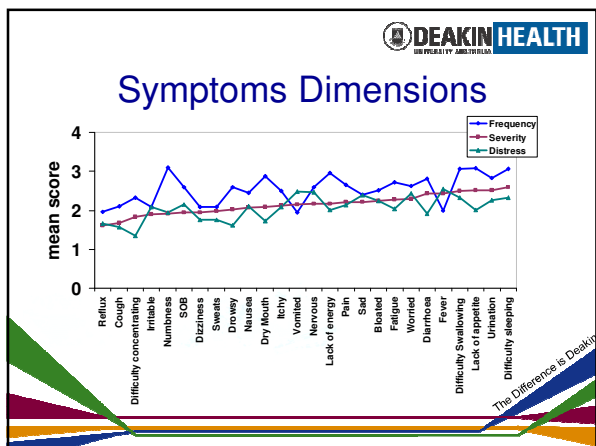
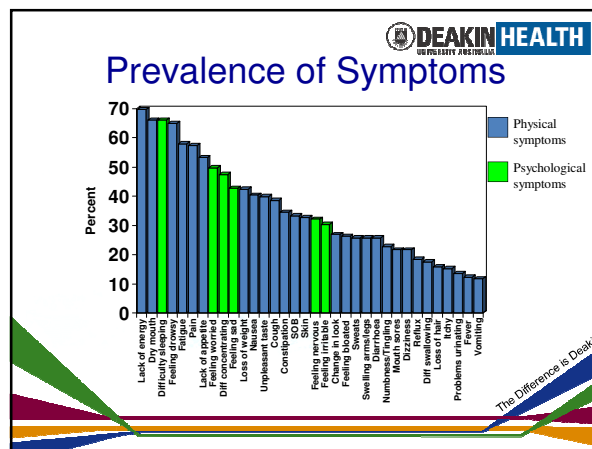
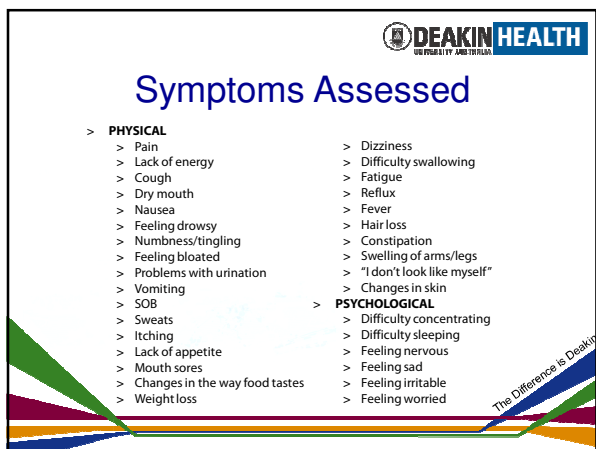
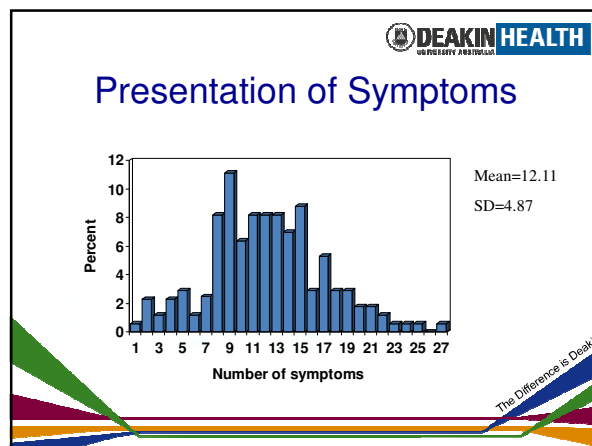
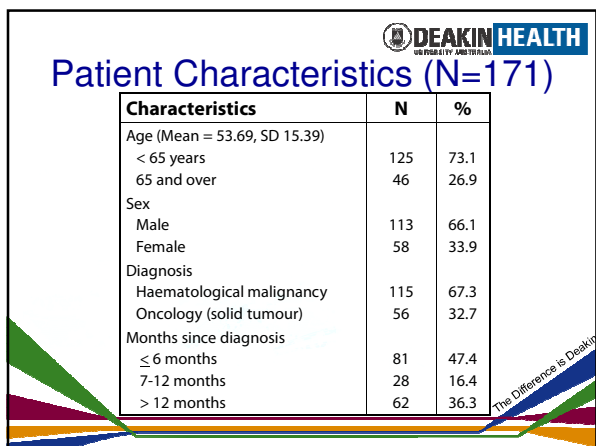
The Difference is Deakin

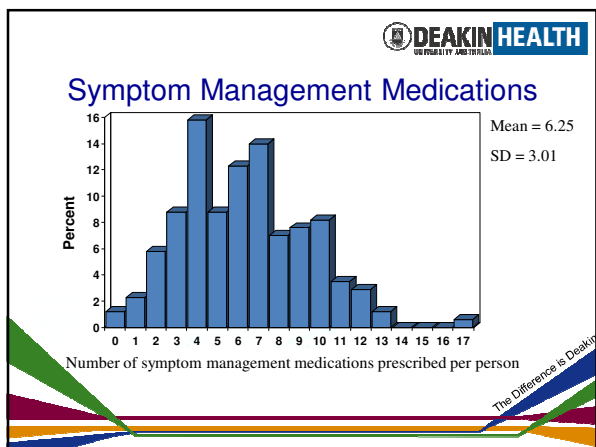
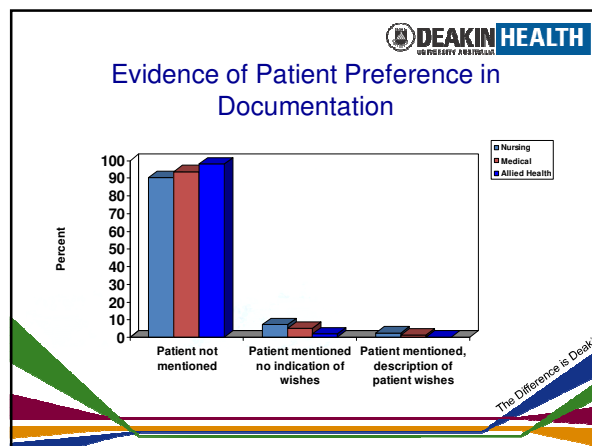
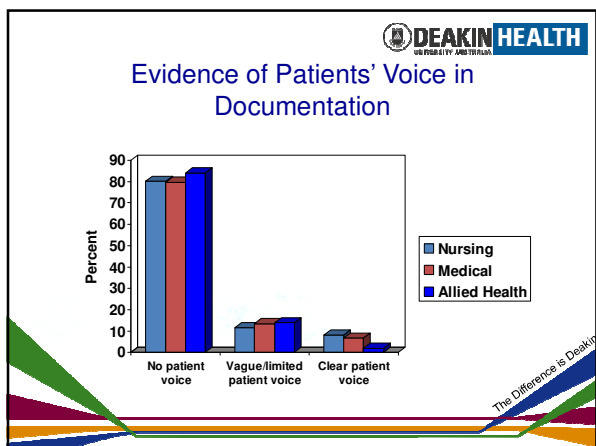


## Methods

- > Design
  - > A single case study, mixed method, repeated measures
    - > Survey
      - > Multi-Symptom Assessment & Participation Questionnaire (MSAPQ – purposely designed using previously validated tools)
    - > Medical record audit
    - > Naturalistic observation
    - > Focus group and individual interviews

The Difference is Deakin

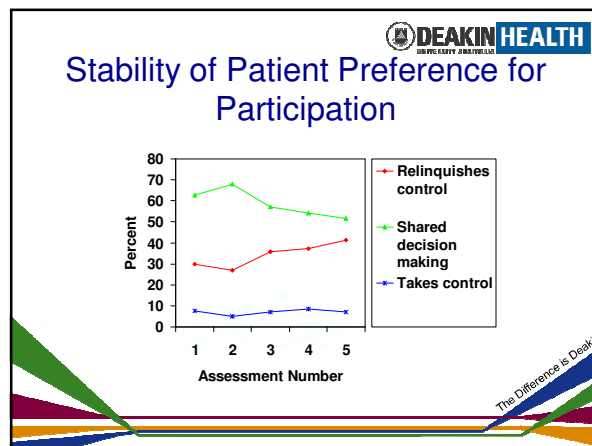
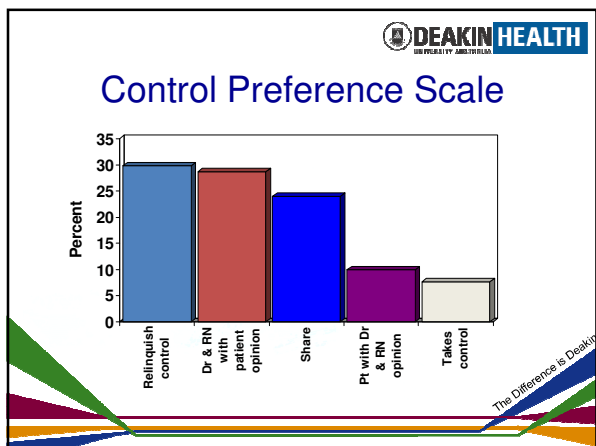





### Symptom Management Medications

- > Overall patients had:
- > 20 different classifications of drugs prescribed
- > 63 different medications

Drug classification	Number of different medications prescribed	Proportion administered
Analgesics	19	52.35
Antiemetics	10	56.28
Antidiarrhoeals	2	60.35
Laxatives	7	28.7
Sedatives	3	68.2



 **DEAKIN HEALTH**  
UNIVERSITY OF AUSTRALIA


## Predictors of patient participation

> Exploratory analysis using Logistic Regression  
Entry into model 0.1, removal 0.2

Variables	B(SE)	Exp(B)	Sig.	Pre-model sig.
Constant	2.27(.769)	9.671	.003	
Age	-.019(.012)	.981	.096	.092
Month Since Diagnosis	.014(.009)	1.014	.105	.039
Treatment during admission	-.790(.412)	.454	.055	.022

> Model  $\chi^2(3) = 11.690, p = .009$   
> Overall prediction 70.8


*The Difference is Deakin*

 **DEAKIN HEALTH**  
UNIVERSITY OF AUSTRALIA

## Accommodating patient participation in practice

- > Review of the relative roles of patients, clinicians and organisation
- > Congruence between patient preference for participation and actual participation
- > Arming patients with the knowledge they need to make judgments about their own care
- > Engaging the multidisciplinary team to modify some care practices

*The Difference is Deakin*

 **DEAKIN HEALTH**  
UNIVERSITY OF AUSTRALIA

## Thank you

[emma.cohen@deakin.edu.au](mailto:emma.cohen@deakin.edu.au)  
[mari.botti@deakin.edu.au](mailto:mari.botti@deakin.edu.au)

*The Difference is Deakin*